



Company Profile

Website: <https://www.utsubo.com>

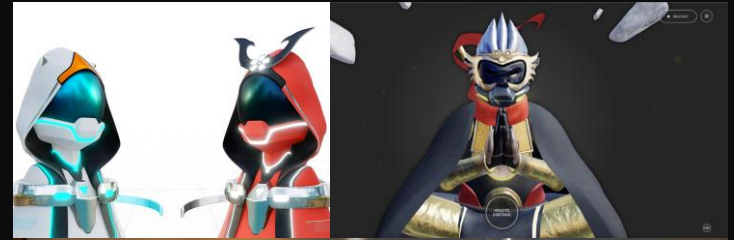
Email: contact@utsubo.co

Address: 1-13-18 Nishishinsaibashi, Chuo Ward, Osaka 542-0086

Overview : Real-time 3D, Web Development, Web Design,
Metaverse, Consulting, Interactive Installations.

Our Technology & Content

- Utsubo is a creative studio specializing in 3D real-time experiences, including promotional websites, web metaverses, and interactive installations.
- We are a major contributor to the new WebGPU engine of Three.js, the leading web 3D library used by companies such as NASA, Google, and Disney.
- Our technical consulting services help companies optimize and port their web applications to WebGPU. For example, we helped the startup segments.ai in reducing the processing time of a single segmentation operation on a 13-million-particle dataset from 300 ms to just 1 ms.
- We will showcase an interactive installation of a water simulation inspired by Hokusai's The Great Wave at Expo 2025 in Osaka.
- Our in-house metaverse engine can display up to 2,000 users simultaneously on a single screen.
- We have a proven track record of delivering diverse projects internationally, including website creation, AR experiences, and 3D e-learning games, in regions such as Europe and the United States.



Awards

FWA: 10

Awwwards: 7

Webby: Honoree Mention

XR Kaigi Awards 2024 (基盤技術部門)



What we want to do

Purpose:

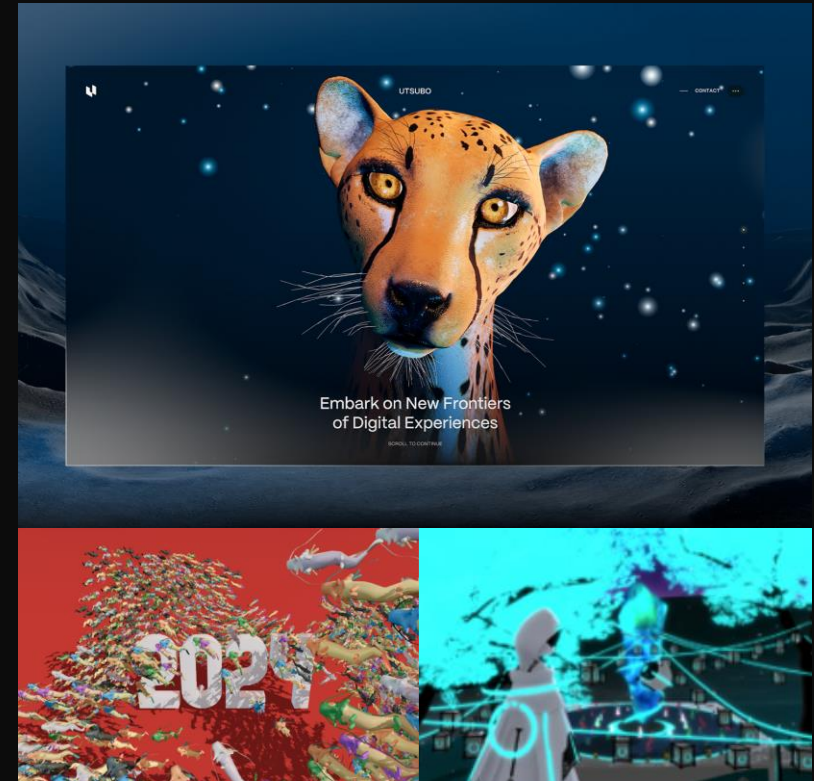
Utsubo is specialized in creating technically and visually ambitious web projects and real-time interactive installations, helping brands deliver never-before-seen experiences that captivate users. We are skilled at providing consistent support from the concept stage to production, excelling at solving complex technical challenges and promoting innovative 3D web experiences using the latest technologies.

Request:

We seek partners, clients, and developers in the technology, advertising, education, and entertainment sectors, particularly those looking for advanced WebGL/WebGPU expertise or aiming to create impactful interactive experiences. We are also looking to collaborate with strong design companies and interactive installation equipment providers, such as those **developing innovative display screens**.

Advantage:

Since its inception, Utsubo's driving vision has been to continuously push the limits of web technology. With over 10 years of expertise in real-time 3D, from metaverse projects to WebGPU, we deliver solutions that address any technical challenge and bring our clients' ideas to life with unique, immersive experiences.



“Explore new frontiers of technology with us to craft the digital experiences of tomorrow.”



Utsubo Co. Ltd.
Lecamus Jocelyn - ceo