

A white silhouette of the London skyline against a dark blue background, featuring landmarks like Big Ben, the London Eye, and the Shard.

Crossrail

Thames Valley Transport Group

Simon Bennett

Head of Stakeholder Management



The Scheme

The Programme

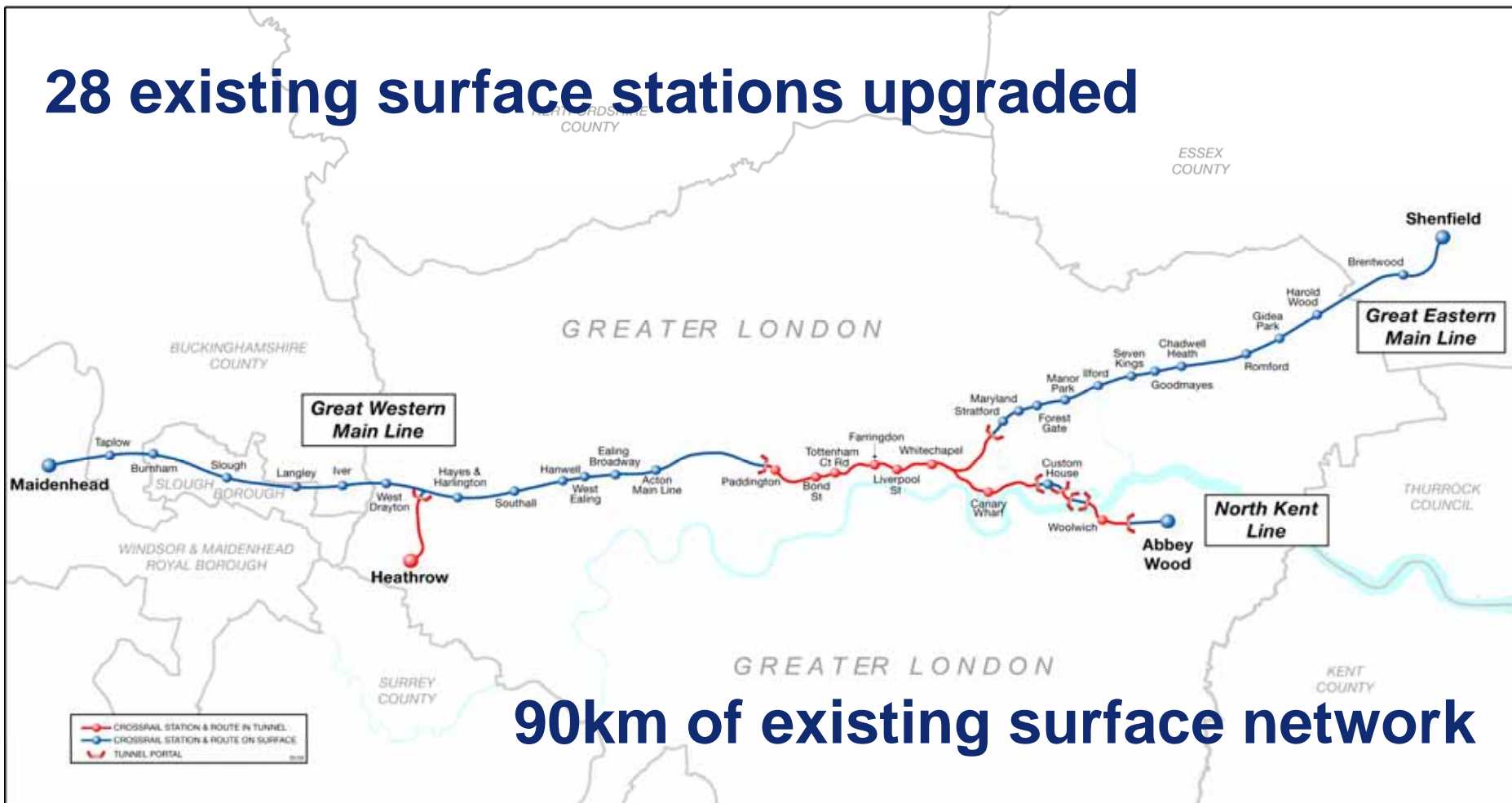
The Western Route



The Scheme



28 existing surface stations upgraded

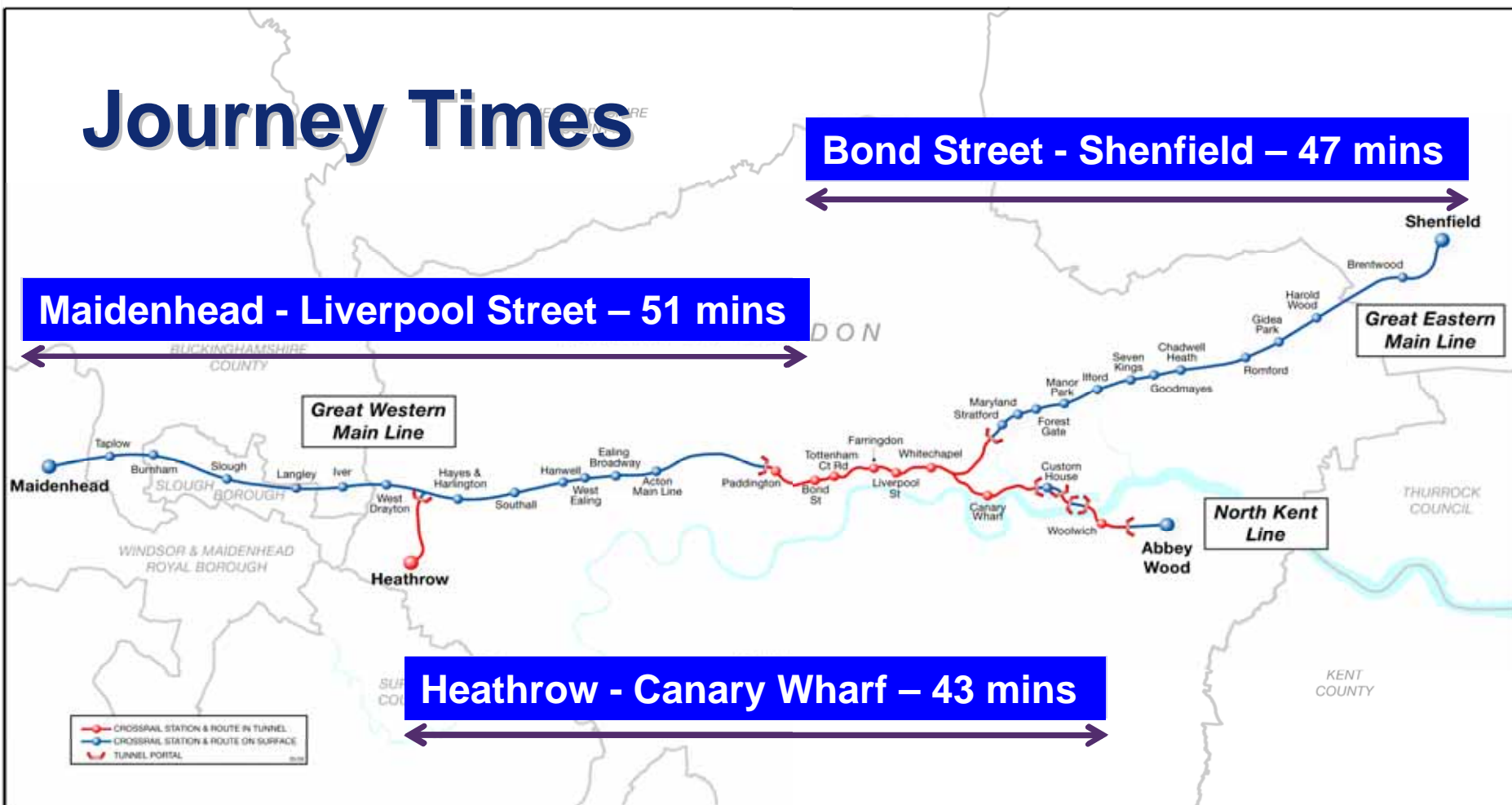


Journey Times

Bond Street - Shenfield – 47 mins

Maidenhead - Liverpool Street – 51 mins

Heathrow - Canary Wharf – 43 mins





Rolling Stock

- A mainline train fleet allowing 240 mph at peak period services
- 200m long trains – 10 carriages each with three sets of doors
- 1,500 seated and standing passengers per train at peak times





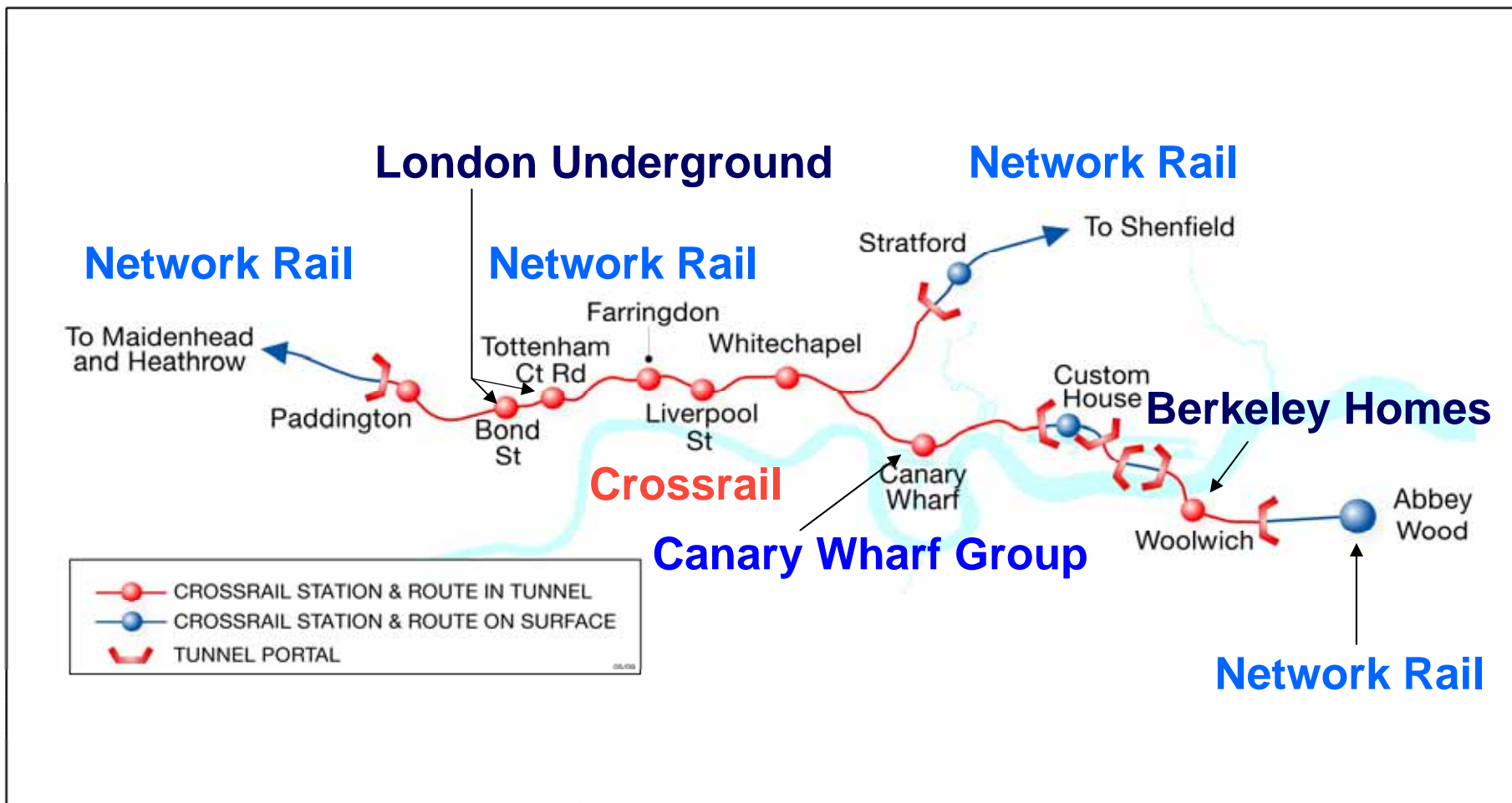
Crossrail Benefits



A white silhouette of a city skyline against a dark blue background, featuring various buildings and landmarks like a tower, a Ferris wheel, and a dome.

The Programme

Industry Partners



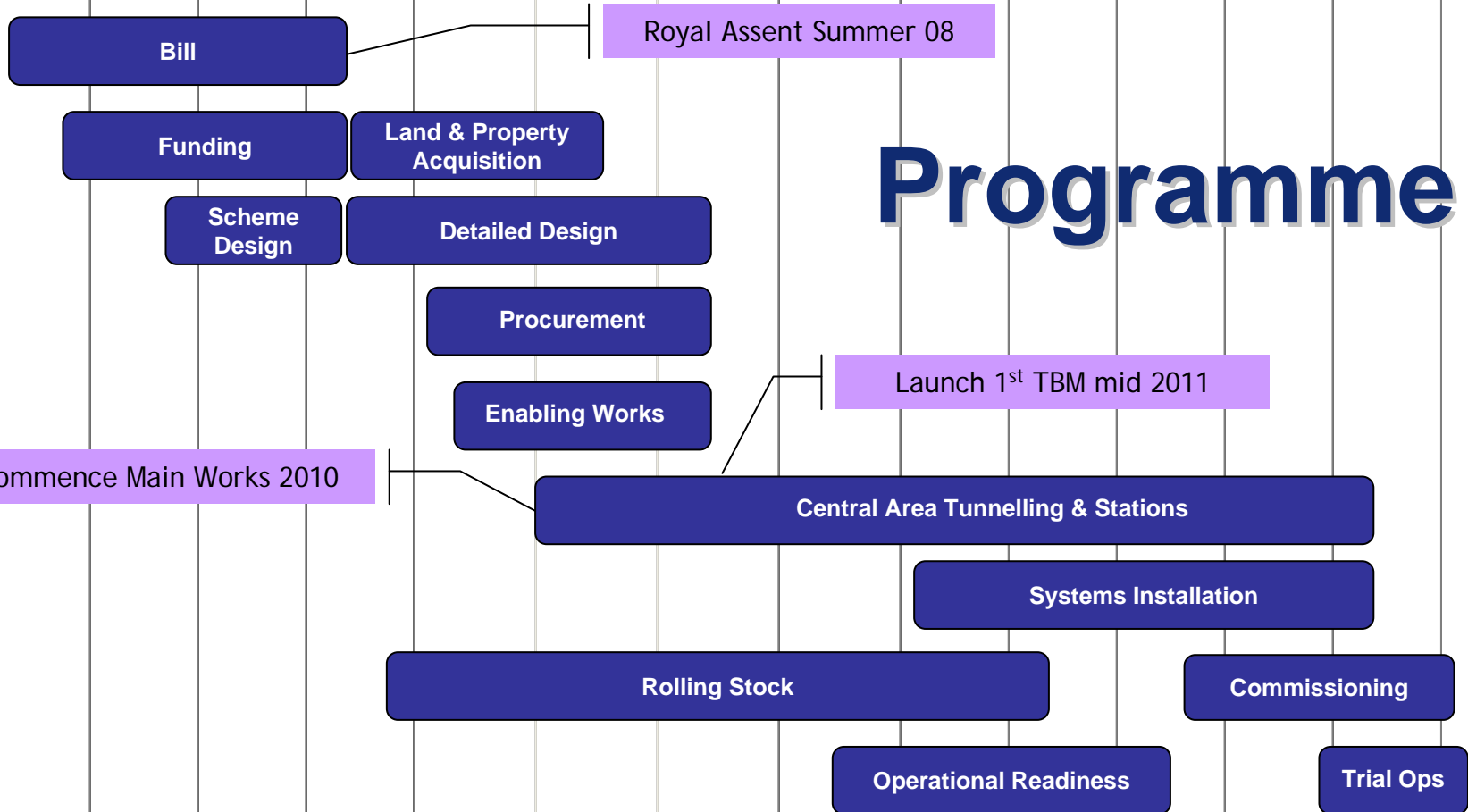
Community Relations

- Crossrail Community Relations Strategy
- Commitment to keep people informed
- Visitor Information Centre
- Regular CRL Bulletin
- Contractor CR Representatives
- 24 hour helpdesk - 0345 602 3813
or helpdesk@crossrail.co.uk
- Independent Complaints Commissioner
- Planning Forum with Local Authorities





2005 2006 2007 2008 2009 2010 2011 2012 2013 2014 2015 2016 2017 2018



Programme

New trains on existing infrastructure

▼▼▼▼
Phased Opening

A white silhouette of a city skyline against a dark blue background, featuring various buildings and landmarks like a tower, a Ferris wheel, and a dome.

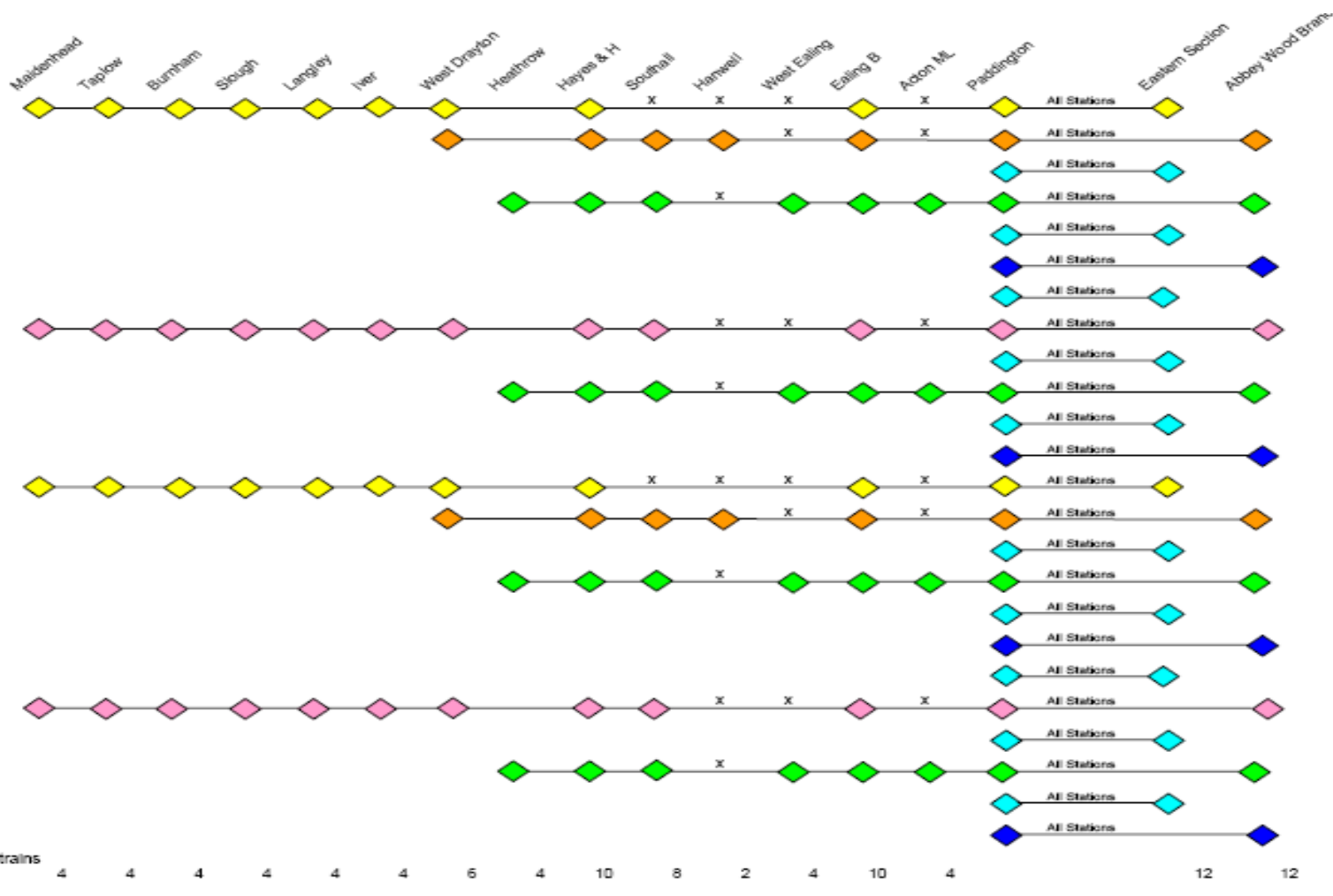
The Western Route

A white silhouette of the London skyline against a dark blue background, featuring landmarks like Big Ben, the London Eye, and the Shard.

Proposed Services

- 10 tph on Great Western Main Line
 - 4tph to/from Heathrow Terminal 4
 - 2tph to/from West Drayton
 - 4tph to/from Maidenhead
- Operation will be franchised by TfL London Rail
- Ticketing system will be fully integrated with Oyster

Proposed Crossrail Train Service Pattern - Western Section Detail – Morning Peak to London/Evening Peak from London

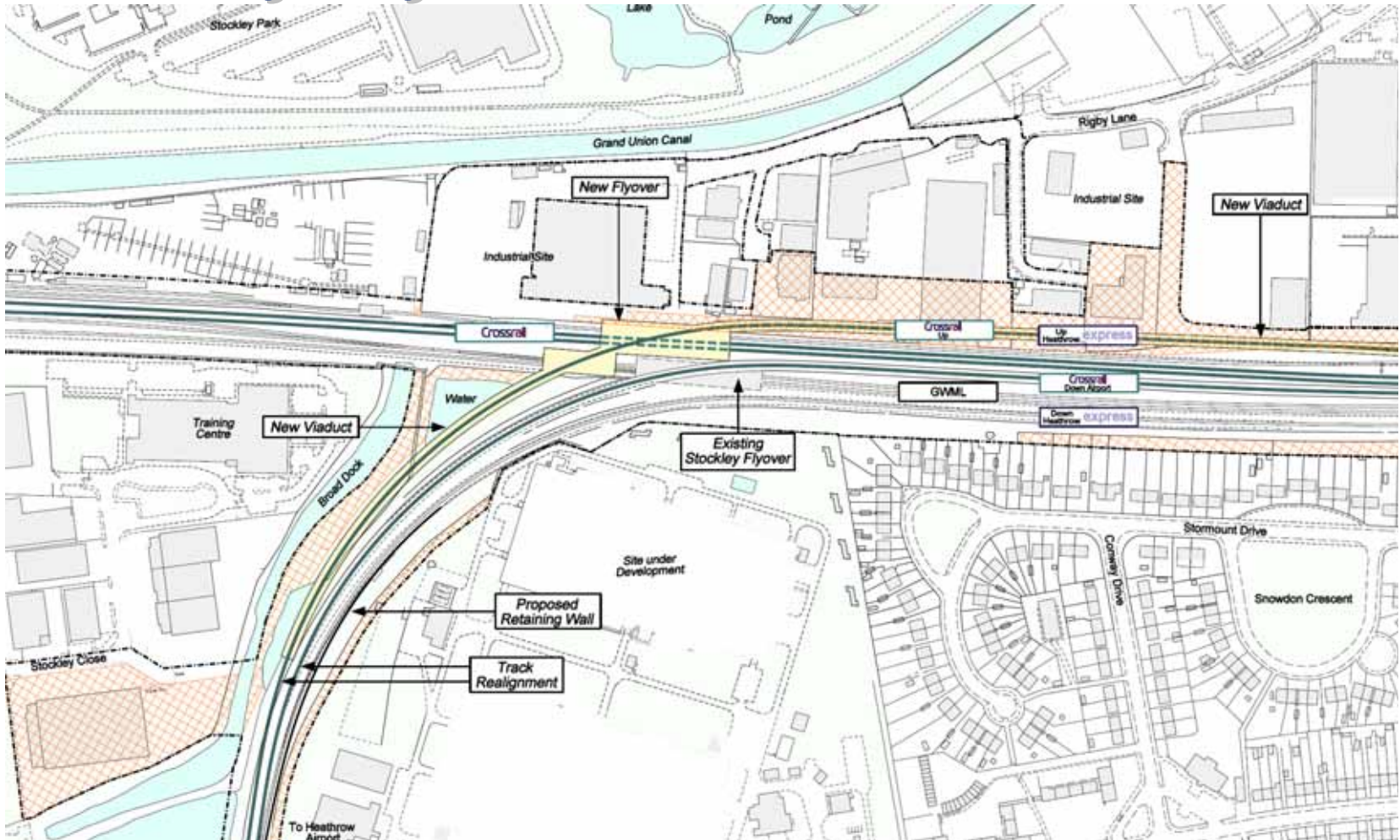


A white silhouette of a city skyline against a dark blue background, featuring recognizable landmarks like Big Ben, the London Eye, and the Gherkin.

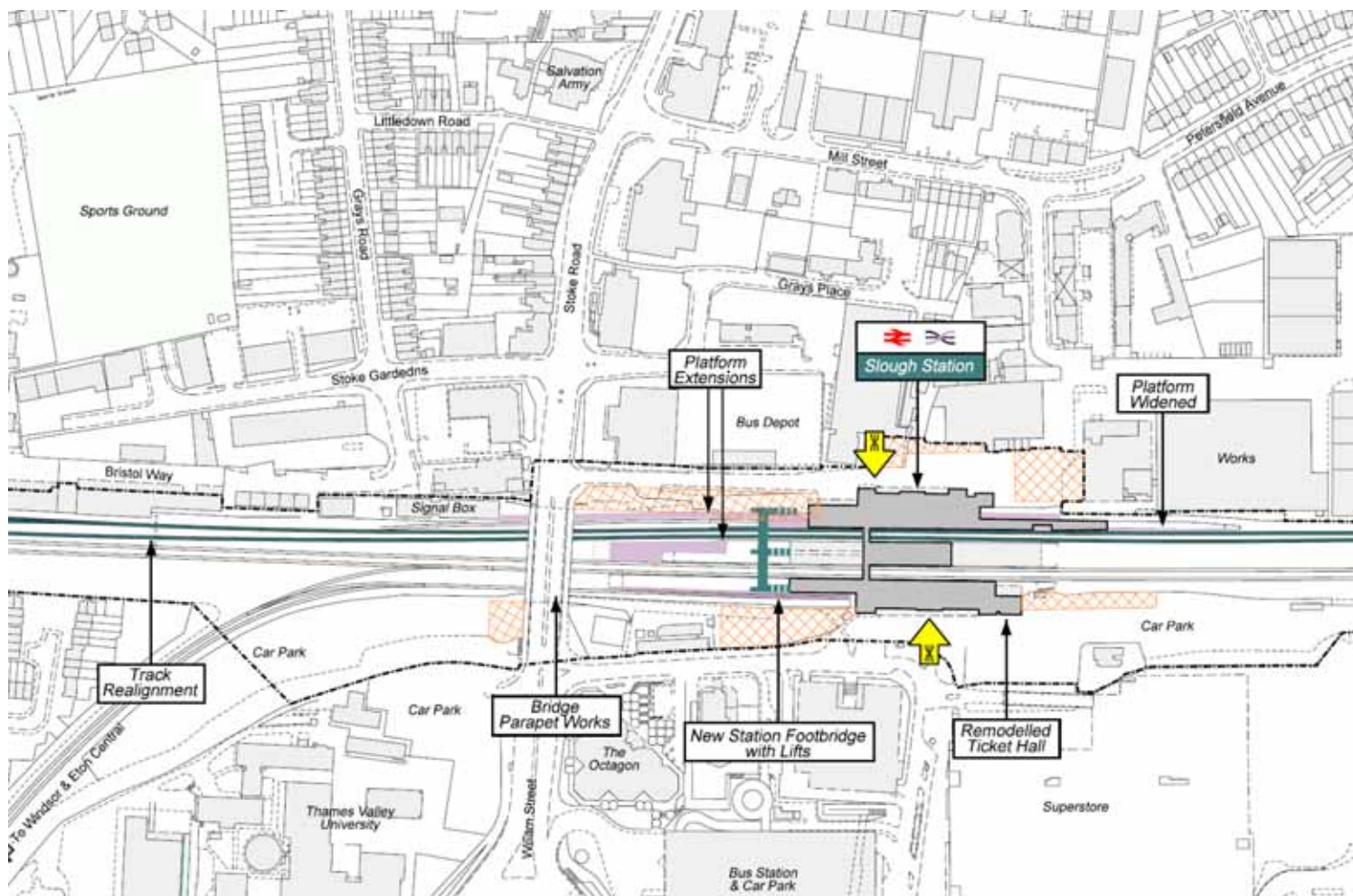
Delivering the work

- Network Rail
 - Stations
 - Track, Signalling and Electrification
 - Capacity enhancements
- Depot – Old Oak Common
- Tunnelling Academy

Stockley Flyover



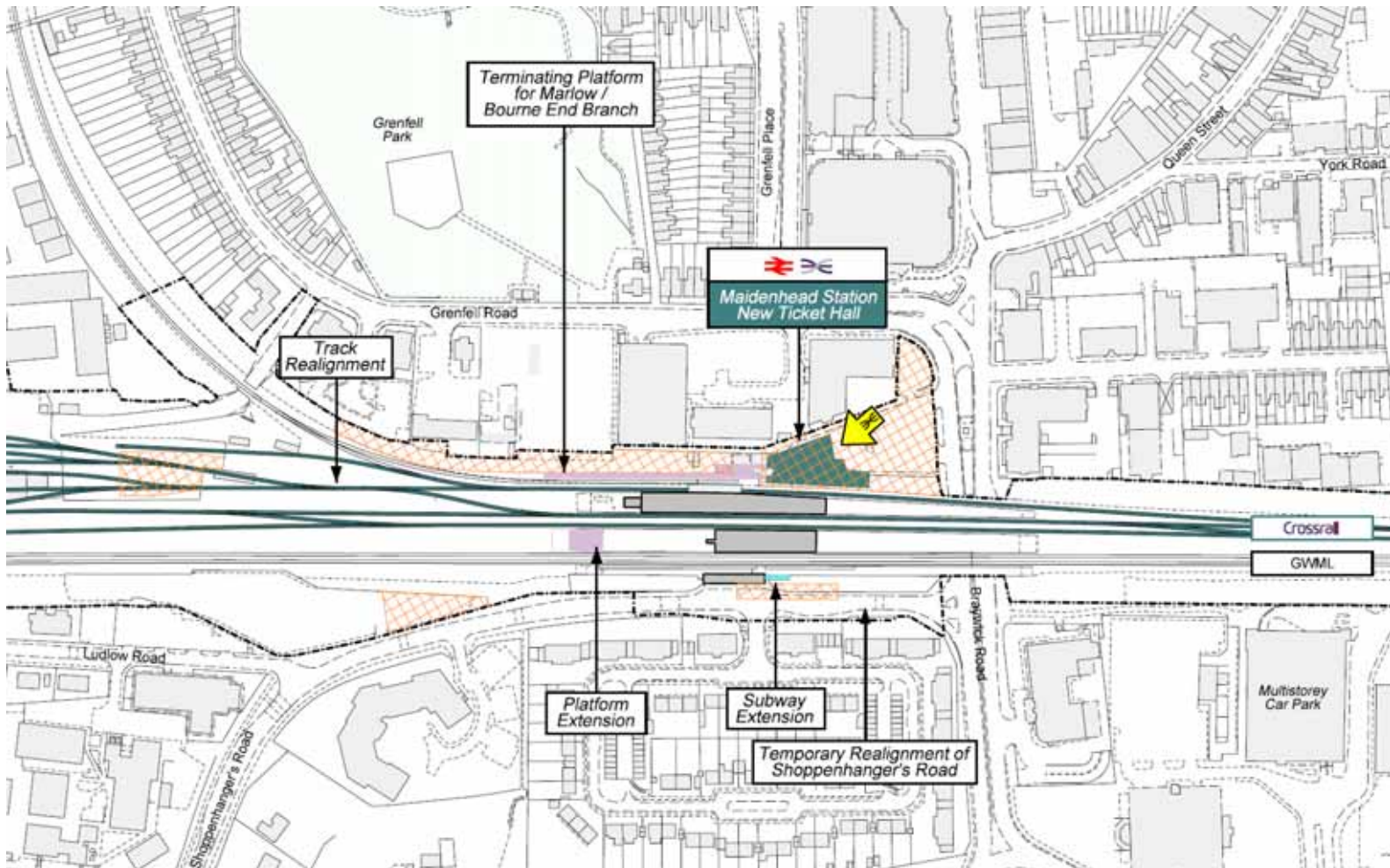
Slough Station



Maidenhead Viaduct



Maidenhead Station



A white silhouette of the London skyline against a dark blue background, featuring landmarks like Big Ben, the London Eye, and the Shard.

On-Network Programme

- NR is developing designs
- NR meetings with local authorities
- Programme will be available later this year
- Most work in 2013-1017

A white silhouette of the London skyline against a dark blue background, featuring landmarks like Big Ben, the London Eye, and the Shard.

***Delivering a world-class
affordable railway safely
through effective partnerships***